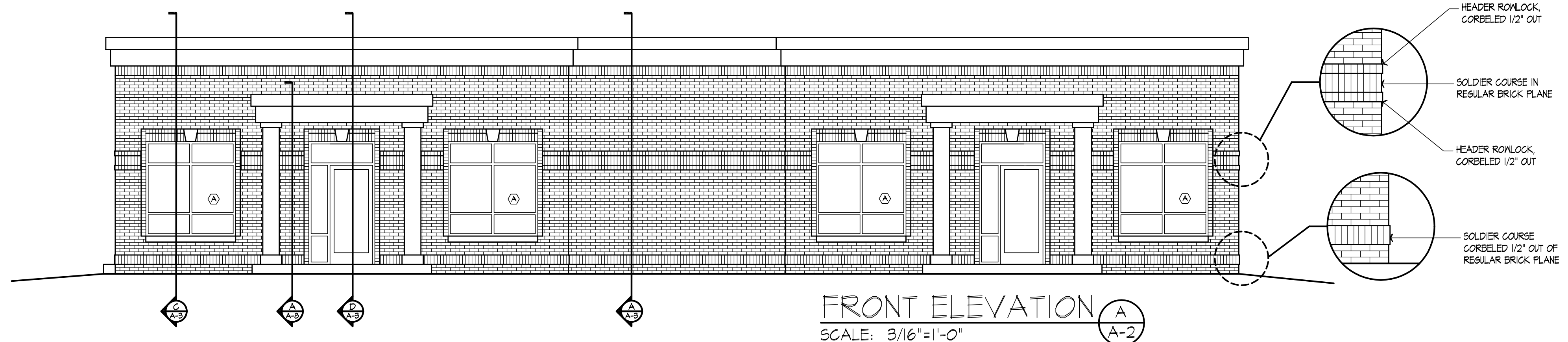
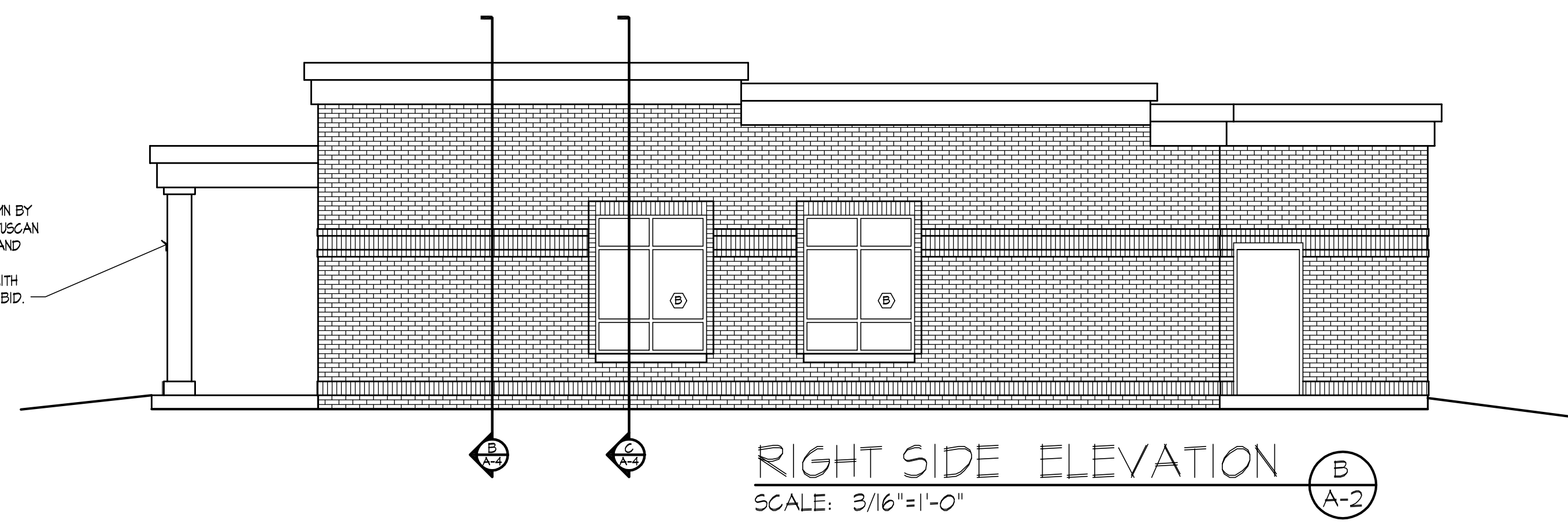


BRICK DETAIL @ FRONT WINDOWS

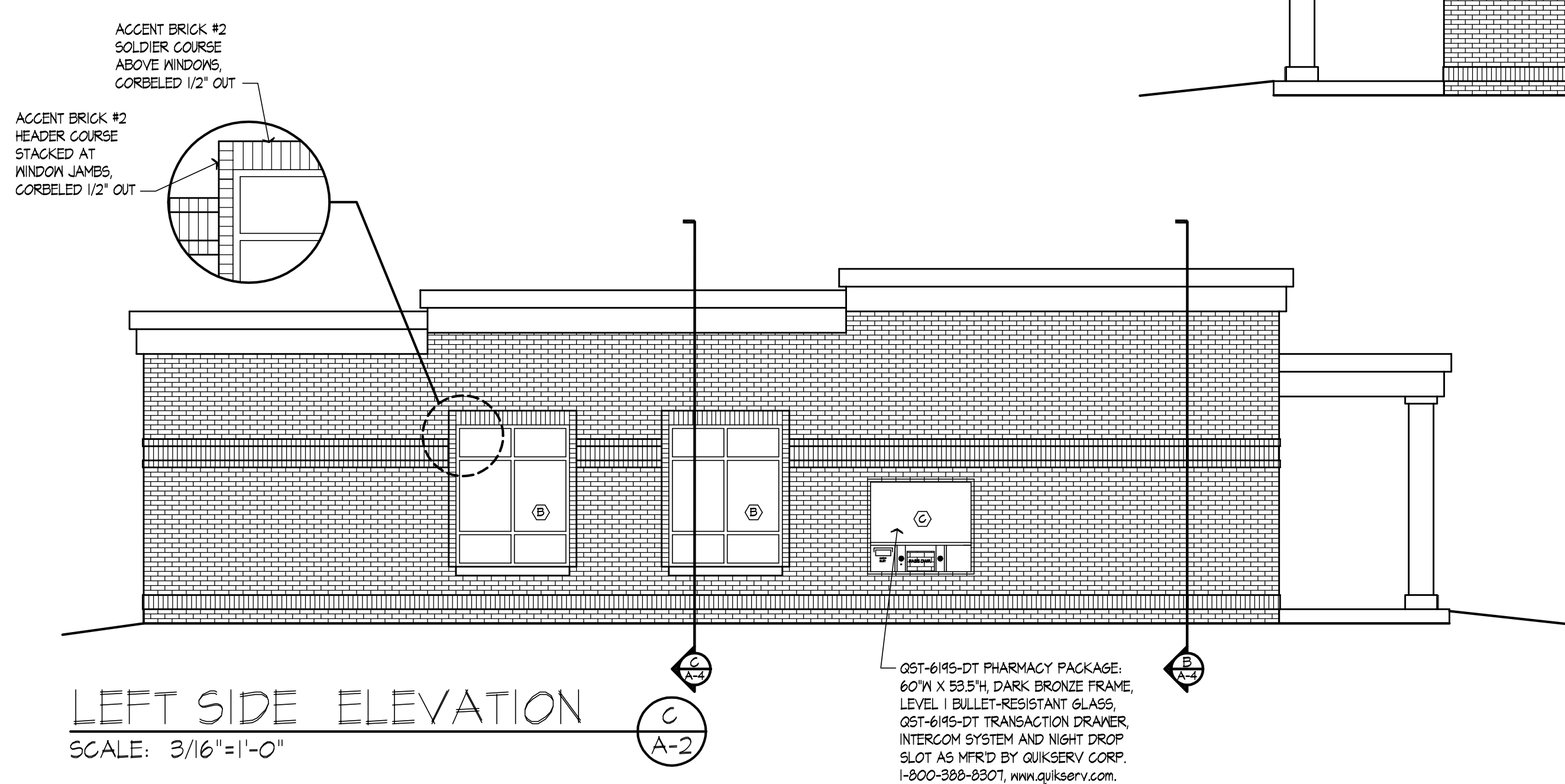
\* ALL BRICK DETAILING AROUND WINDOWS AND DOORS, AND SOLDIER/HEADER COURSES SHALL BE WITH THE ACCENT BRICK #2 W/ MATCHING MORTAR AS INDICATED.



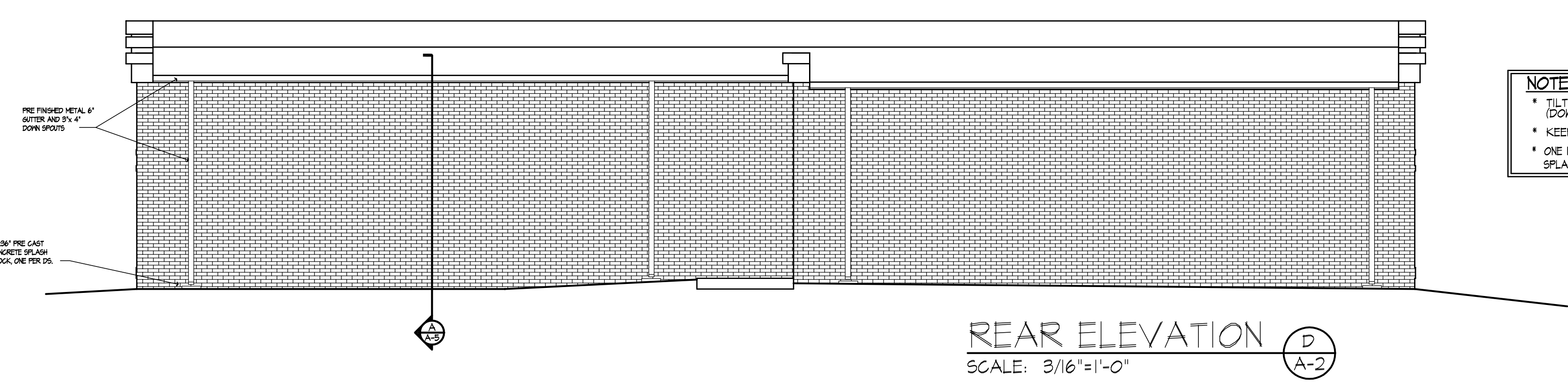
FRONT ELEVATION A  
SCALE: 3/16"=1'-0"



RIGHT SIDE ELEVATION B  
SCALE: 3/16"=1'-0"



LEFT SIDE ELEVATION C  
SCALE: 3/16"=1'-0"



REAR ELEVATION D  
SCALE: 3/16"=1'-0"

NOTES:  
 \* TILT GUTTERS TOWARD D.S. (DOWNSPOUTS)  
 \* KEEP D.S. CLOSE TO BLDG.  
 \* ONE 12" X 30" PRECAST CONCRETE SPLASH BLOCK PER DOWNSPOUT

EXTERIOR FINISHES:

- ALL GUTTERS, DOWNSPOUTS, PRE FINISHED VINYL COATED ALUM. EXTERIOR TRIM, VINYL SOFFITS AND ASSOCIATED TRIM SHALL BE THE COLOR "DESERT SAND" BY ALCOA OR EQUAL.
- EIFS SYSTEM FINISH COLOR TO BE "309T SADDLESOAP" by SENERGY OR APPROVED EQUAL
- FIBERGLASS COLUMNS TO BE PRIMED AND PAINTED W/ GLIDDEN #A1821 EUROPEAN WHITE
- ALL WINDOW AND DOOR GLAZING SHALL BE SOLARBLUE (2) GLASS WITH SOLARBAN 60 (3) BY PPG
- ALL ALUMINUM WINDOWS AND DOOR FRAMES TO BE DARK BRONZE
- HOLLOW METAL DOORS AND FRAMES PAINTED TO MATCH "DARK BRONZE" ALUMINUM DOORS
- MAIN BRICK #1 (RUNNING BOND): STANDARD SIZE FACE BRICK, TYPE FBX, HANSON BRICK -CAROLINA COLLECTION "RED WIRE CUT" 222 MODULAR WITH flamingo BRIXMENT #C-31 MORTAR
- ACCENT BRICK #2 (@ SOLDIER, HEADER, CORBELS AND ALL ACCENT ROWS): STANDARD SIZE FACE BRICK, TYPE FBX, HANSON BRICK - CAROLINA COLLECTION " BROWN WIRE CUT - 420 MODULAR" WITH flamingo BRIXMENT #M-21 MORTAR

CITY OF STANTON  
**CITY HALL & POLICE STATION**  
 STANTON, KENTUCKY

DATE	REVISION	BY

PROJECT NO. 4065-04	DESIGNED BY BLL/MSF
	DRAWN BY BLL
	CHECKED BY
DATE JUNE 2015	REVIEWED BY
SCALE AS NOTED	

Engineers  
 Architects  
 Planners

OF KENTUCKY, INC.

624 Wallington Way  
 Lexington, KY 40503  
 Phone: (859)223-5694  
 Fax: (859)223-2607  
 www.msex.com

DRAWING NO.  
**A-2**  
 SHEET OF